



# CAIR-FLYER **BUNDESIMMISSIONS- SCHUTZVERORDNUNG**

Stand 10 | 2022

---

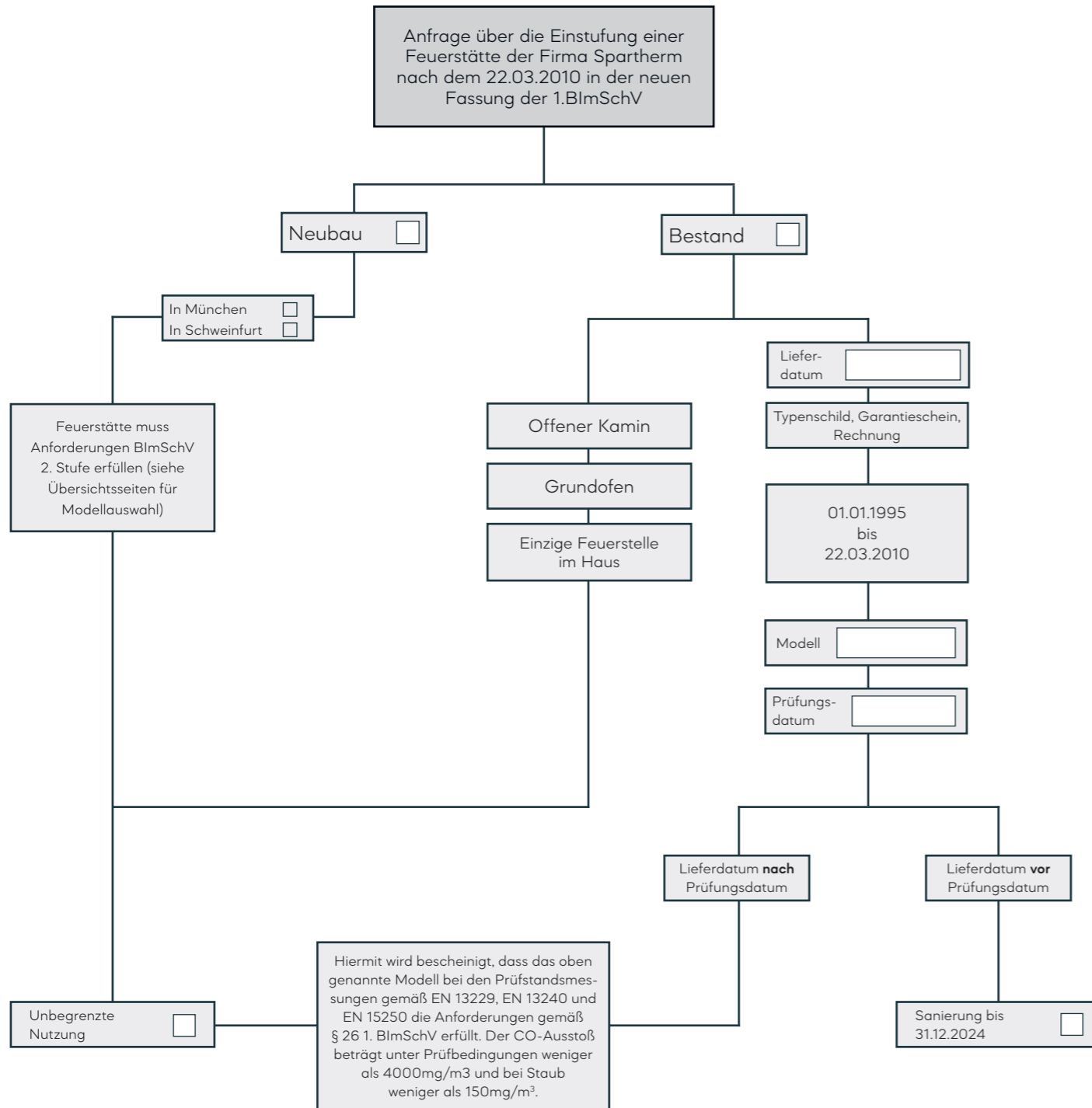
# Prüfstandmessbescheinigung

Für bestehende Anlagen, die vor dem 23.03.2010 erbaut wurden, musste bereits bis Ende 2013 ein Nachweis über die Einhaltung der Anforderungen (CO 4000mg/Nm<sup>3</sup>, Staub 150mg/Nm<sup>3</sup>) der BImSchV erfolgen. Am einfachsten geht der Nachweis über die HKI-Datenbank, welche unter [www.hki-online.de](http://www.hki-online.de), Menüpunkt „Geräte“ zu finden ist. Wird für die Anlagen kein Nachweis über die Einhaltung der Emissionsanforderungen geführt, so schreibt die BImSchV eine Sanierung vor.

Modelle, die bis zum 31.12.1994 eingebaut wurden, müssen grundsätzlich saniert werden!  
Einbau von 01.01.1995 – 20.03.2010 → Sanierung bis 31.12.2024

Name \_\_\_\_\_  
Vorname \_\_\_\_\_  
Straße / Nr. \_\_\_\_\_  
PLZ / Ort \_\_\_\_\_

Die Richtlinie Ökodesign (IV) gilt grundlegend für **alle** aktuellen Geräte, unabhängig der jeweiligen Variante.



Fachbetrieb: \_\_\_\_\_

Ort, Datum: \_\_\_\_\_

Unterschrift des Fachbetriebs/  
Schornsteinfegers: \_\_\_\_\_

# Aktuelle Modelle

Anforderungen	Spalte	Anforderungen	Staub	CO	Wirkungsgrad in %			NOx	CnHm
					Einsatz	Ofen	Kachelofen		
I	geprüft nach DIN EN 13229 / 13240			1 % (12500mg/Nm <sup>3</sup> )	30	50	30	-	-
II	DIN plus (für Kamineinsätze / Kaminöfen) Juni 2008	75 mg/Nm <sup>3</sup>	1500 mg/Nm <sup>3</sup>		72	75	72	200 mg/Nm <sup>3</sup>	120 mg/Nm <sup>3</sup>
	DIN plus (für Kaminöfen) September 2011	40 mg/Nm <sup>3</sup>	1250 mg/Nm <sup>3</sup>		-	78	-	200 mg/Nm <sup>3</sup>	120 mg/Nm <sup>3</sup>
III	2. Stufe BImSchV. 2010. ab Inkrafttreten 31.12.2014	40 mg/Nm <sup>3</sup>	1250 mg/Nm <sup>3</sup>		75	73	75	-	-
IV	Ökodesign	40 mg/Nm <sup>3</sup>	1500 mg/Nm <sup>3</sup>		65			200 mg/Nm <sup>3</sup>	120 mg/Nm <sup>3</sup>
	BStV München	40 mg/Nm <sup>3</sup>	1250 mg/Nm <sup>3</sup>		75	73	80	200 mg/m <sup>3</sup>	-
V	BStV München (für Pelletöfen)	30 mg/Nm <sup>3</sup>	250 mg/Nm <sup>3</sup>		85			200 mg/m <sup>3</sup>	-
	Art. 15a B-VG: Österreich	35 mg/MJ	1100 mg/MJ		80			150 mg/MJ	50 mg/MJ
VI	Art. 15a B-VG: Österreich (für Pelletöfen)	25 mg/MJ	500 mg/MJ		-	80	-	100 mg/MJ	30 mg/MJ
	Schweiz: Erfüllungen ab 01.01.2011	75 mg/Nm <sup>3</sup>	1500 mg/Nm <sup>3</sup>		-			-	-
VII	Schweiz: Erfüllungen ab 01.01.2011	75 mg/Nm <sup>3</sup>	1500 mg/Nm <sup>3</sup>		-			-	-
VIII	Luftreinhaltungsverordnung Schweinfurt	40 mg/Nm <sup>3</sup>	1250 mg/Nm <sup>3</sup>		78			200 mg/Nm <sup>3</sup>	120 mg/Nm <sup>3</sup>

Modellname	NWL in kW	Prüfungsdatum	I	II	III	IV	V	VI	VII	VIII
Mini R1V	5,2	07/2012	✓	✓	✓	✓	✓	✓	✓	✓
Mini R1V N	6,2	07/2012	✓	✓	✓	✓	✓	✓	✓	✓
Mini R1V RLU	5,2	07/2012	✓	✓	✓	✓	✓	✓	✓	✓
Mini Z1-7,0 kW	7,0	07/2003	✓	✓	✓	✓	✓	✓(8 kW)	✓	✓
Mini Z1-10,0 kW N	10,0	07/2006	✓	✓	✓	✓	✓	✓	✓	✓
Mini Z1 RLU	7,0	09/2012	✓	✓	✓	✓	✓	-	✓	✓
Mini S	7,0	09/2006	✓	✓	✓	✓	✓	✓*	✓	✓
Mini S RLU	7,0	09/2012	✓	✓	✓	✓	✓	-	✓	✓
Mini Sh	7,0	09/2006	✓	✓	✓	✓	✓	✓*	✓	✓
Mini Sh RLU	7,0	09/2017	✓	✓	✓	✓	✓	-	✓	✓
Mini S-FDh	6,0	08/2008	✓	✓	✓	✓	✓	✓*	✓	✓
Mini 2L/2R	7,0	04/2015	✓	✓	✓	✓	✓	✓	✓	✓
Mini 2LRh	7,0	04/2015	✓	✓	✓	✓	✓	✓	✓	✓
Speedy Ph	7,0	10/2011	✓	✓	✓	✓	✓	✓	✓	✓
Varia 1V	11,0	07/2018	✓	✓	✓	✓	✓	✓	✓	✓
Varia 1V N	17,0	07/2018	✓	✓	✓	✓	✓	✓	✓	✓
Varia 1V RLU	11,0	10/2013	✓	✓	✓	✓	✓	-	✓	✓
Varia 1V 51 T	11,0	07/2018	✓	✓	✓	✓	✓	✓	✓	✓
Varia 1V 57 T	10,8	07/2018	✓	✓	✓	✓	✓	✓	✓	✓
Varia 1V H <sub>2</sub> O	8,0/5,0 <sup>1</sup>	07/2013	✓	✓	✓	✓	✓	✓	✓	✓
Varia 1V H <sub>2</sub> O XL	9,0/6,0 <sup>1</sup>	07/2013	✓	✓	✓	✓	✓	✓	✓	✓
Varia 1V H <sub>2</sub> O XXL	15,0/11,0 <sup>1</sup>	07/2013	✓	✓	✓	✓	✓	✓	✓	✓
Varia 1Vh	11,0	06/2018	✓	✓	✓	✓	✓	✓	✓	✓
Varia 1Vh N	17,0	06/2018	✓	✓	✓	✓	✓	✓	✓	✓
Varia 1Vh RLU	11,0	06/2018	✓	✓	✓	✓	✓	✓	✓	✓
Varia 1Vh 51 T	11,0	07/2018	✓	✓	✓	✓	✓	✓	✓	✓
Varia 1Vh 57 T	10,8	07/2018	✓	✓	✓	✓	✓	✓	✓	✓
Varia 1Vh H <sub>2</sub> O	8,0/5,0 <sup>1</sup>	07/2013	✓	✓	✓	✓	✓	✓	✓	✓
Varia 1Vh H <sub>2</sub> O XL	9,0/6,0 <sup>1</sup>	07/2013	✓	✓	✓	✓	✓	✓	✓	✓
Varia 1Vh H <sub>2</sub> O XXL	15,0/11,0 <sup>1</sup>	07/2013	✓	✓	✓	✓	✓	✓	✓	✓
Varia 1V-87h	9,5	04/2019	✓	✓	✓	✓	✓	✓	✓	✓
Varia 1V-87h N	10,9	04/2019	✓	✓	✓	✓	✓	✓	✓	✓
Varia 1V-87h T	9,5	08/2019	✓	✓	✓	✓	✓	✓	✓	✓
Varia 1V-100h	10,4	08/2014	✓	✓	✓	✓	✓	✓	✓	✓
Varia Sh	10,5	07/2022	✓	✓	✓	✓	✓	✓	✓	✓
Varia Sh T	10,5	07/2022	✓	✓	✓	✓	✓	✓	✓	✓
Varia AS	7,0	02/2013	✓	✓	✓	✓	✓	✓	✓	✓

Legende: ✓ erfüllt die Anforderung | ✓\* erfüllt die Anforderung nur mit AT-Aufsatz (Aufsatzaggregat S), Achtung: Abgasanschlusshöhe + 160 mm  
· wird zur Zeit geprüft | N = Nachschaltheizfläche | S = Gerät mit geringer Leistung zusätzlich geprüft | T = S-Thermetik | <sup>1</sup> = wasserseitig | v = vorne, h = hinten

# Aktuelle Modelle

Spalte	Anforderungen	Staub	CO	Wirkungsgrad in %			NOx	CnHm	
				Einsatz	Ofen	Kachel- ofen			
Anforderungen	I	geprüft nach DIN EN 13229 / 13240		1% (12500mg/Nm³)	30	50	30	-	-
	II	DIN plus (für Kamineinsätze / Kaminöfen) Juni 2008	75 mg/Nm³	1500 mg/Nm³	72	75	72	200 mg/Nm³	120 mg/Nm³
		DIN plus (für Kaminöfen) September 2011	40 mg/Nm³	1250 mg/Nm³	-	78	-	200 mg/Nm³	120 mg/Nm³
	III	2. Stufe BImSchV. 2010. ab Inkrafttreten 31.12.2014	40 mg/Nm³	1250 mg/Nm³	75	73	75	-	-
	IV	Ökodesign	40 mg/Nm³	1500 mg/Nm³	65			200 mg/Nm³	120 mg/Nm³
		BStV München	40 mg/Nm³	1250 mg/Nm³	75	73	80	200 mg/m³	-
	V	BStV München (für Pelletöfen)	30 mg/Nm³	250 mg/Nm³	85			200 mg/m³	-
		Art. 15a B-VG: Österreich	35 mg/MJ	1100 mg/MJ	80			150 mg/MJ	50 mg/MJ
	VI	Art. 15a B-VG: Österreich (für Pelletöfen)	25 mg/MJ	500 mg/MJ	-	80	-	100 mg/MJ	30 mg/MJ
	VII	Schweiz: Erfüllungen ab 01.01.2011	75 mg/Nm³	1500 mg/Nm³	-			-	-
VIII	Luftreinhalteverordnung Schweinfurt	40 mg/Nm³	1250 mg/Nm³	78			200 mg/Nm³	120 mg/Nm³	

Modellname	NWL in kW	Prüfungsdatum	I	II	III	IV	V	VI	VII	VIII
Varia AS N	11,0	04/2013	✓	✓	✓	✓	✓	✓	✓	✓
Varia AS RLU	7,0	12/2013	✓	✓	✓	✓	✓	-	✓	✓
Varia ASH	7,0	02/2013	✓	✓	✓	✓	✓	✓	✓	✓
Varia ASH RLU	7,0	12/2016	✓	✓	✓	✓	✓	✓	✓	✓
Varia ASH N	11,0	04/2013	✓	✓	✓	✓	✓	✓	✓	✓
Varia AS-FDh	7,0	05/2013	✓	✓	✓	✓	✓	✓	✓	✓
Varia AS-2Lh	7,0	12/2013	✓	✓	✓	✓	✓	✓	✓	✓
Varia AS-2Rh	7,0	12/2013	✓	✓	✓	✓	✓	✓	✓	✓
Varia AS-3RLh	8,4	03/2016	✓	✓	✓	✓	✓	✓	✓	✓
Varia Ah	10,4	12/2011	✓	✓	✓	✓	✓	✓	✓	✓
Varia Ah H <sub>2</sub> O	10,4/7,2 <sup>1</sup>	01/2012	✓	✓	✓	✓	✓	✓	✓	✓
Varia Bh	10,4	02/2012	✓	✓	✓	✓	✓	✓*	✓	✓
Varia Bh RLU	10,4	09/2017	✓	✓	✓	✓	✓	-	✓	✓
Varia B-120h	15,0	11/2010	✓	✓	✓	✓	✓	✓*	✓	✓
Varia M-80h RLU	9,0	09/2017	✓	✓	✓	✓	✓	✓	✓	-
Varia FD	11,6	04/2016	✓	✓	✓	✓	✓	✓	✓	✓
Varia FD RLU	11,6	04/2016	✓	✓	✓	✓	✓	✓	✓	✓
Varia FD H <sub>2</sub> O	10,0/6,4 <sup>1</sup>	04/2015	✓	✓	✓	✓	✓	✓	✓	✓
Varia FDh	11,6	11/2015	✓	✓	✓	✓	✓	✓	✓	✓
Varia FDh H <sub>2</sub> O	10,0/6,4 <sup>1</sup>	04/2015	✓	✓	✓	✓	✓	✓	✓	✓
Varia FD-87h	10,6	10/2019	✓	✓	✓	✓	✓	✓	✓	✓
Varia FD-87h N	11,1	10/2019	✓	✓	✓	✓	✓	✓	✓	✓
Varia FD-86h T	10,6	10/2019	✓	✓	✓	✓	✓	✓	✓	✓
Varia A-FDh	10,4	02/2012	✓	✓	✓	✓	✓	✓	✓	✓
Varia A-FDh H <sub>2</sub> O	10,4/6,2 <sup>1</sup>	12/2011	✓	✓	✓	✓	✓	✓	✓	✓
Varia B-FDh	11,0	01/2008	✓	✓	✓	✓	✓	✓*	✓	✓
Varia 2Lh	11,0	01/2010	✓	✓	✓	✓	✓	✓	✓	✓
Varia 2Lh N	12,0	09/2011	✓	✓	✓	✓	✓	✓	✓	✓
Varia 2Lh H <sub>2</sub> O	10,4	01/2010	✓	✓	✓	✓	✓	-	✓	✓
Varia 2L-55	7,0	01/2018	✓	✓	✓	✓	✓	✓	✓	✓
Varia 2L-55h	7,0	01/2018	✓	✓	✓	✓	✓	✓	✓	✓
Varia 2L-55h RLU	7,0	10/2017	✓	✓	✓	✓	✓	✓	✓	✓
Varia 2L-55h H <sub>2</sub> O	7,0 <sup>1</sup>	02/2013	✓	✓	✓	✓	✓	✓	✓	✓
Varia 2L-62	6,9	05/2020	✓	✓	✓	✓	✓	✓	✓	✓
Varia 2L-62h	6,9	05/2020	✓	✓	✓	✓	✓	✓	✓	✓
Varia 2L-62h RLU	6,9	08/2020	✓	✓	✓	✓	✓	✓	✓	✓

# Aktuelle Modelle

Modellname	NWL in kW	Prüfungsdatum	I	II	III	IV	V	VI	VII	VIII
Varia 2L-62 N	10,0	05/2020	✓	✓	✓	✓	✓	✓	✓	✓
Varia 2L-62h N	10,0	05/2020	✓	✓	✓	✓	✓	✓	✓	✓
Varia 2L-62 T	7,1	05/2020	✓	✓	✓	✓	✓	✓	✓	✓
Varia 2L-62h T	7,1	05/2020	✓	✓	✓	✓	✓	✓	✓	✓
Varia 2L-68h	9,6	03/2019	✓	✓	✓	✓	✓	✓	✓	✓
Varia 2L-68h N	9,9	03/2019	✓	✓	✓	✓	✓	✓	✓	✓
Varia 2L-68h T	9,7	03/2019	✓	✓	✓	✓	✓	✓	✓	✓
Varia 2L-80h	11,0	07/2022	✓	✓	✓	✓	✓	✓	✓	✓
Varia 2L-80h T	11,0	07/2022	✓	✓	✓	✓	✓	✓	✓	✓
Varia 2L-100h	12,3	07/2022	✓	✓	✓	✓	✓	✓	✓	✓
Varia 2L-100h T	11,6	07/2022	✓	✓	✓	✓	✓	✓	✓	✓
Varia 2Rh	11,0	01/2010	✓	✓	✓	✓	✓	✓	✓	✓
Varia 2Rh N	12,0	09/2011	✓	✓	✓	✓	✓	✓	✓	✓
Varia 2Rh H <sub>2</sub> O	10,4 <sup>1</sup>	01/2010	✓	✓	✓	✓	✓	-	✓	✓
Varia 2R-55	7,0	01/2018	✓	✓	✓	✓	✓	✓	✓	✓
Varia 2R-55h	7,0	01/2018	✓	✓	✓	✓	✓	✓	✓	✓
Varia 2R-55h RLU	7,0	10/2017	✓	✓	✓	✓	✓	✓	✓	✓
Varia 2R-55h H <sub>2</sub> O	7,0 <sup>1</sup>	02/2013	✓	✓	✓	✓	✓	✓	✓	✓
Varia 2R-62	6,9	05/2020	✓	✓	✓	✓	✓	✓	✓	✓
Varia 2R-62h	6,9	05/2020	✓	✓	✓	✓	✓	✓	✓	✓
Varia 2R-62h RLU	6,9	08/2020	✓	✓	✓	✓	✓	✓	✓	✓
Varia 2R-62 N	10,0	05/2020	✓	✓	✓	✓	✓	✓	✓	✓
Varia 2R-62h N	10,0	05/2020	✓	✓	✓	✓	✓	✓	✓	✓
Varia 2R-62 T	7,1	05/2020	✓	✓	✓	✓	✓	✓	✓	✓
Varia 2R-62h T	7,1	05/2020	✓	✓	✓	✓	✓	✓	✓	✓
Varia 2R-68h	9,6	03/2019	✓	✓	✓	✓	✓	✓	✓	✓
Varia 2R-68h N	9,9	03/2019	✓	✓	✓	✓	✓	✓	✓	✓
Varia 2R-68h T	9,7	03/2019	✓	✓	✓	✓	✓	✓	✓	✓
Varia 2R-80h	11,0	07/2022	✓	✓	✓	✓	✓	✓	✓	✓
Varia 2R-80h T	11,0	07/2022	✓	✓	✓	✓	✓	✓	✓	✓
Varia 2R-100h	12,3	07/2022	✓	✓	✓	✓	✓	✓	✓	✓
Varia 2R-100h T	11,6	07/2022	✓	✓	✓	✓	✓	✓	✓	✓
Varia Ch	9,0	07/2006	✓	✓	✓	✓	✓	✓*	✓	✓
Arte 1Vh-66	6,6	07/2015	✓	✓	✓	✓	✓	✓	✓	✓
Arte 1Vh-66 RLU	6,6	09/2017	✓	✓	✓	✓	✓	✓	✓	✓
Arte 1Vh-66 N	10,4	07/2015	✓	✓	✓	✓	✓	✓	✓	✓
Arte Bh	11,0	01/2008	✓	✓	✓	✓	✓	✓	✓	✓
Arte 2LRh-66	6,4	08/2015	✓	✓	✓	✓	✓	✓	✓	✓
Arte 2LRh-66 N	10,4	08/2015	✓	✓	✓	✓	✓	✓	✓	✓
Arte U-50h	9,3	09/2019	✓	✓	✓	✓	✓	✓	✓	✓
Arte U-50h T	9,3	09/2019	✓	✓	✓	✓	✓	✓	✓	✓
Arte U-70h	11,4	12/2017	✓	✓	✓	✓	✓	✓	✓	✓
Arte U-70h T	11,6	12/2017	✓	✓	✓	✓	✓	✓	✓	✓
Arte U-90h	13,0	01/2008	✓	✓	✓	✓	✓	✓*	✓	✓
Arte 3RL-60h	10,0	07/2018	✓	✓	✓	✓	✓	✓	✓	✓
Arte 3RL-80h	11,4	07/2018	✓	✓	✓	✓	✓	✓	✓	✓
Arte 3RL-80h T	12,3	07/2018	✓	✓	✓	✓	✓	✓	✓	✓
Arte 3RL-100h	11,0	08/2008	✓	✓	✓	✓	✓	✓*	✓	✓
Kamin-kassetten klein	6,0	01/2013	✓	✓	✓	✓	✓	✓	✓	✓
Kamin-kassetten groß	8,0	04/2013	✓	✓	✓	✓	✓	✓	✓	✓

Legende: ✓ erfüllt die Anforderung | ✓\* erfüllt die Anforderung nur mit AT-Aufsatz (Aufsatzaggregat S), Achtung: Abgasanschlusshöhe + 160 mm  
 · wird zur Zeit geprüft | N = Nachschalheizfläche | S = Gerät mit geringer Leistung zusätzlich geprüft | T = S-Thermetik | <sup>1</sup> = wasserseitig | v = vorne, h = hinten

# Aktuelle Modelle

Anforderungen	Spalte	Anforderungen	Staub	CO	Wirkungsgrad in %			NOx	CnHm
					Einsatz	Ofen	Kachel- ofen		
I		geprüft nach DIN EN 13229 / 13240		1% (12500mg/Nm³)	30	50	30	-	-
II		DIN plus (für Kamineinsätze / Kaminöfen) Juni 2008	75 mg/Nm³	1500 mg/Nm³	72	75	72	200 mg/Nm³	120 mg/Nm³
		DIN plus (für Kaminöfen) September 2011	40 mg/Nm³	1250 mg/Nm³	-	78	-	200 mg/Nm³	120 mg/Nm³
III		2. Stufe BImSchV. 2010. ab Inkrafttreten 31.12.2014	40 mg/Nm³	1250 mg/Nm³	75	73	75	-	-
IV		Ökodesign	40 mg/Nm³	1500 mg/Nm³	65			200 mg/Nm³	120 mg/Nm³
		BStV München	40 mg/Nm³	1250 mg/Nm³	75	73	80	200 mg/m³	-
V		BStV München (für Pelletöfen)	30 mg/Nm³	250 mg/Nm³	85			200 mg/m³	-
		Art. 15a B-VG: Österreich	35 mg/MJ	1100 mg/MJ	80			150 mg/MJ	50 mg/MJ
VI		Art. 15a B-VG: Österreich (für Pelletöfen)	25 mg/MJ	500 mg/MJ	-	80	-	100 mg/MJ	30 mg/MJ
		Schweiz: Erfüllungen ab 01.01.2011	75 mg/Nm³	1500 mg/Nm³	-			-	-
VIII		Luftreinhalteverordnung Schweinfurt	40 mg/Nm³	1250 mg/Nm³	78			200 mg/Nm³	120 mg/Nm³

Classic	Kaminöfen	Modellname	NWL in kW	Prüfungsdatum	I	II	III	IV	V	VI	VII	VIII
					✓	✓	✓	✓	✓	✓	✓	✓
		Linear Kasette S 600	5,0	06/2022	✓	✓	✓	✓	✓	✓	✓	✓
		Linear Kasette M 700	6,0	06/2022	✓	✓	✓	✓	✓	✓	✓	✓
		Linear Kasette L 800	7,0	06/2022	✓	✓	✓	✓	✓	✓	✓	✓
		Linear Kasette XL 900	8,0	06/2022	✓	✓	✓	✓	✓	✓	✓	✓
		Nova E H <sub>2</sub> O	14,0/9,0 <sup>1</sup>	01/2010	✓	✓	✓	✓	✓	✓	✓	✓
		Renova A H <sub>2</sub> O	13,4/6,9 <sup>1</sup>	01/2010	✓	✓	✓	✓	✓	✓	✓	✓
		Renova B-Air	8,8	06/2011	✓	✓	✓	✓	✓	✓	✓	✓
		Renova C-44	Holz: 8,5 BK: 7,8	12/2013	✓	✓	✓	✓	✓	✓	✓	✓
		Renova Cs-42	6,5	04/2019	✓	✓	✓	✓	✓	✓	✓	✓
		Renova Cs-50	7,0	04/2019	✓	✓	✓	✓	✓	✓	✓	✓
		ambiente a3	5,9	01/2010	✓	✓	✓	✓	✓	✓	✓	✓
		ambiente a3 RLU	5,9	03/2010	✓	✓	✓	✓	✓	✓	✓	✓
		ambiente a4	5,9	01/2010	✓	✓	✓	✓	✓	✓	✓	✓
		ambiente a4 RLU	5,9	03/2010	✓	✓	✓	✓	✓	✓	✓	✓
		ambiente a4 H <sub>2</sub> O	8,0/5,2 <sup>1</sup>	12/2010	✓	✓	✓	✓	✓	✓	✓	✓
		ambiente a4 H <sub>2</sub> O RLU	8,0/5,2 <sup>1</sup>	01/2010	✓	✓	✓	✓	✓	✓	✓	✓
		ambiente a7	5,9	06/2013	✓	✓	✓	✓	✓	✓	✓	✓
		ambiente a8	5,9	06/2013	✓	✓	✓	✓	✓	✓	✓	✓
		Linear Module XS	4,0	08/2014	✓	✓	✓	✓	✓	✓	✓	✓
		Linear Module M	6,9	11/2016	✓	✓	✓	✓	✓	✓	✓	✓
		Lungo 2L/2R	6,0	02/2019	✓	✓	✓	✓	✓	✓	✓	✓
		Piko S steel	5,9	07/2019	✓	✓	✓	✓	✓	✓	✓	✓
		Piko S / L	5,9	07/2014	✓	✓	✓	✓	✓	✓	✓	✓
		Piko S / L RLU	5,9	08/2017	✓	✓	✓	✓	✓	✓	✓	✓
		Piko H <sub>2</sub> O	7,9/4,6 <sup>1</sup>	07/2012	✓	✓	✓	✓	✓	✓	✓	✓
		Cubo S / L	5,9	07/2014	✓	✓	✓	✓	✓	✓	✓	✓
		Cubo S / L RLU	5,9	08/2017	✓	✓	✓	✓	✓	✓	✓	✓
		Cubo L stlye / RLU	5,9	07/2020	✓	✓	✓	✓	✓	✓	✓	✓
		Senso S	7,0	02/2011	✓	✓	✓	✓	✓	✓	✓	✓
		Senso M H <sub>2</sub> O	7,9/5,0 <sup>1</sup>	03/2009	✓	✓	✓	✓	✓	✓	✓	✓
		Senso L	5,9	07/2022	✓	✓	✓	✓	✓	✓	✓	✓
		Senso L RLU	5,9	07/2022	✓	✓	✓	✓	✓	✓	✓	✓
		Senso L mit S-Thermetik	6,0	07/2022	✓	✓	✓	✓	✓	✓	✓	✓
		Senso L fashion	5,9	07/2022	✓	✓	✓	✓	✓	✓	✓	✓
		Senso L fashion RLU	5,9	07/2022	✓	✓	✓	✓	✓	✓	✓	✓
		Senso L fashion mit S-Thermetik	6,0	07/2022	✓	✓	✓	✓	✓	✓	✓	✓
		Senso L klassik	5,9	07/2022	✓	✓	✓	✓	✓	✓	✓	✓

# Aktuelle Modelle

Kaminöfen	Premium Edition	Modellname	NWL in kW	Prüfungsdatum	I	II	III	IV	V	VI	VII	VIII
					✓	✓	✓	✓	✓	✓	✓	✓
		Senso L klassik RLU	5,9	07/2022	✓	✓	✓	✓	✓	✓	✓	✓
		Senso L klassik mit S-Thermetik	6,0	07/2022	✓	✓	✓	✓	✓	✓	✓	✓
		Sino L	5,9	07/2022	✓	✓	✓	✓	✓	✓	✓	✓
		Sino L RLU	5,9	07/2022	✓	✓	✓	✓	✓	✓	✓	✓
		Sino L mit S-Thermetik	6,0	07/2022	✓	✓	✓	✓	✓	✓	✓	✓
		Sino City	5,9	07/2022	✓	✓	✓	✓	✓	✓	✓	✓
		Sino City RLU	5,9	07/2022	✓	✓	✓	✓	✓	✓	✓	✓
		Sino City mit S-Thermetik	6,0	07/2022	✓	✓	✓	✓	✓	✓	✓	✓
		Sento	6,5	08/2019	✓	✓	✓	✓	✓	✓	✓	✓
		Sento RLU	6,5	08/2019	✓	✓	✓	✓	✓	✓	✓	✓
		Moro	5,0	07/2014	✓	✓	✓	✓	✓	✓	✓	✓
		Moro RLU	5,0	01/2016	✓	✓	✓	✓	✓	✓	✓	✓
		Passo XS	5,9	05/2020	✓	✓	✓	✓	✓	✓	✓	✓
		Passo XS RLU	5,9	05/2020	✓	✓	✓	✓	✓	✓	✓	✓
		Passo XS mit S-Thermetik	5,9	05/2020	✓	✓	✓	✓	✓	✓	✓	✓
		Passo XS style	5,9	05/2020	✓	✓	✓	✓	✓	✓	✓	✓
		Passo XS style RLU	5,9	05/2020	✓	✓	✓	✓	✓	✓	✓	✓
		Passo XS style mit S-Thermetik	5,9	05/2020	✓	✓	✓	✓	✓	✓	✓	✓
		Passo XS tripod	5,9	05/2020	✓	✓	✓	✓	✓	✓	✓	✓
		Passo S / L	6,1	06/2015	✓	✓	✓	✓	✓	✓	✓	✓
		Passo S / L RLU	6,1	01/2016	✓	✓	✓	✓	✓	✓	✓	✓
		Trico S	6,0	07/2022	✓	✓	✓	✓	✓	✓	✓	✓
		Trico S RLU	6,0	07/2022	✓	✓	✓	✓	✓	✓	✓	✓
		Trico S mit S-Thermetik	6,0	07/2022	✓	✓	✓	✓	✓	✓	✓	✓
		Trico L	6,0	07/2022	✓	✓	✓	✓	✓	✓	✓	✓
		Trico L RLU	6,0	07/2022	✓	✓	✓	✓	✓	✓	✓	✓
		Trico S mit L-Thermetik	6,0	07/2022	✓	✓	✓	✓	✓	✓	✓	✓
		Premium V-1V-87h	9,5	05/2019	✓	✓	✓	✓	✓	✓	✓	✓
		Premium V-1V-87h N	10,9	05/2019	✓	✓	✓	✓	✓	✓	✓	✓
		Premium 1V-87h T	9,5	05/2019	✓	✓	✓	✓	✓	✓	✓	✓
		Premium V-FD-87h	10,6	10/2019	✓	✓	✓	✓	✓	✓	✓	✓
		Premium V-FD-87h N	11,1	10/2019	✓	✓	✓	✓	✓	✓	✓	✓
		Premium V-FD-87h T	10,6	10/2019	✓	✓	✓	✓	✓	✓	✓	✓
		Premium V-2L / V-2R-55h	7,9	08/2020	✓	✓	✓	✓	✓	✓	✓	✓
		Premium V-2L / V-2R-55h N	10,9	09/2020	✓	✓	✓	✓	✓	✓	✓	✓
		Premium V-2L / V-2R-55h T	7,5	08/2020	✓	✓	✓	✓	✓	✓	✓	✓
		Premium V-2L / V-2R-68h	9,6	05/2019	✓	✓	✓	✓	✓	✓	✓	✓
		Premium V-2L / V-2R-68h N	9,9	05/2019	✓	✓	✓	✓	✓	✓	✓	✓
		Premium V-2L / V-2R-68h T	9,7	05/2019	✓	✓	✓	✓	✓	✓	✓	✓
		Premium V-2L / V-2R-80h	10,5	04/2017	✓	✓	✓	✓	✓	✓	✓	✓
		Premium V-2L / V-2R-80h T	10,2	04/2017	✓	✓	✓	✓	✓	✓	✓	✓
		Premium A-3RL-60h	10,0	08/2017	✓	✓	✓	✓	✓	✓	✓	✓
		Premium A-3RL-60h T	10,0	08/2017	✓	✓	✓	✓	✓	✓	✓	✓
		Premium A-3RL-80h	11,4	02/2017	✓	✓	✓	✓	✓	✓	✓	✓
		Premium A-3RL-80h T	12,3	08/2017	✓	✓	✓	✓	✓	✓	✓	✓
		Premium A-U-50h	9,3	07/2019	✓	✓	✓	✓	✓	✓	✓	✓
		Premium A-U-50h T	9,3	07/2019	✓	✓	✓	✓	✓	✓	✓	✓
		Premium A-U-70h	11,4	09/2017	✓	✓	✓	✓	✓	✓	✓	✓
		Premium A-U-70h T	11,6	09/2017	✓	✓	✓	✓	✓	✓	✓	✓

# Aktuelle Modelle

Anforderungen	Spalte	Anforderungen	Staub	CO	Wirkungsgrad in %			NOx	CnHm
					Einsatz	Ofen	Kachel-ofen		
Anforderungen	I	geprüft nach DIN EN 13229 / 13240		1% (12500mg/Nm³)	30	50	30	-	-
	II	DIN plus (für Kamineinsätze / Kaminöfen) Juni 2008	75 mg/Nm³	1500 mg/Nm³	72	75	72	200 mg/Nm³	120 mg/Nm³
		DIN plus (für Kaminöfen) September 2011	40 mg/Nm³	1250 mg/Nm³	-	78	-	200 mg/Nm³	120 mg/Nm³
	III	2. Stufe BImSchV. 2010. ab Inkrafttreten 31.12.2014	40 mg/Nm³	1250 mg/Nm³	75	73	75	-	-
	IV	Ökodesign	40 mg/Nm³	1500 mg/Nm³	65			200 mg/Nm³	120 mg/Nm³
		BStV München	40 mg/Nm³	1250 mg/Nm³	75	73	80	200 mg/m³	-
	V	BStV München (für Pelletöfen)	30 mg/Nm³	250 mg/Nm³	85			200 mg/m³	-
		Art. 15a B-VG: Österreich	35 mg/MJ	1100 mg/MJ	80			150 mg/MJ	50 mg/MJ
VI	Art. 15a B-VG: Österreich (für Pelletöfen)	25 mg/MJ	500 mg/MJ	-	80	-	100 mg/MJ	30 mg/MJ	
VII	Schweiz: Erfüllungen ab 01.01.2011	75 mg/Nm³	1500 mg/Nm³	-			-	-	
VIII	Luftreinhaltungsverordnung Schweinfurt	40 mg/Nm³	1250 mg/Nm³	78			200 mg/Nm³	120 mg/Nm³	

Modellname	NWL in kW	Prüfungsdatum	Wirkungsgrad in %								VIII	
			I	II	III	IV	V	VI	VII			
Kompaktanlagen	SIM Mini Sh	7,0	09/2006	✓	✓	✓	✓	✓	✓	✓*	✓	✓
	SIM Mini Sh RLU	7,0	09/2017	✓	✓	✓	✓	✓	✓	-	✓	✓
	SIM Mini 2LRh	7,0	04/2015	✓	✓	✓	✓	✓	✓	✓	✓	✓
	SIM Varia AS-2Lh	7,0	12/2013	✓	✓	✓	✓	✓	✓	✓	✓	✓
	SIM Varia AS-2Rh	7,0	12/2013	✓	✓	✓	✓	✓	✓	✓	✓	✓
	SIM Varia 2L-55h	7,0	01/2018	✓	✓	✓	✓	✓	✓	✓	✓	✓
	SIM Varia 2L-55h RLU	7,0	10/2017	✓	✓	✓	✓	✓	✓	✓	✓	✓
	SIM Varia 2L-55h H <sub>2</sub> O	7,0/4,2 <sup>1</sup>	02/2013	✓	✓	✓	✓	✓	✓	-	✓	✓
	SIM Varia 2Lh	11,0	01/2010	✓	✓	✓	✓	✓	✓	✓	✓	✓
	SIM Varia 2Lh H <sub>2</sub> O	10,4/5,9 <sup>1</sup>	12/2012	✓	✓	✓	✓	✓	✓	-	✓	✓
	SIM Varia 2R-55h	7,0	01/2018	✓	✓	✓	✓	✓	✓	✓	✓	✓
	SIM Varia 2R-55h RLU	7,0	10/2017	✓	✓	✓	✓	✓	✓	✓	✓	✓
	SIM Varia 2R-55h H <sub>2</sub> O	7,0/4,2 <sup>1</sup>	02/2013	✓	✓	✓	✓	✓	✓	-	✓	✓
	SIM Varia 2Rh	11,0	01/2010	✓	✓	✓	✓	✓	✓	-	✓	✓
	SIM Varia 2Rh H <sub>2</sub> O	10,4/5,9 <sup>1</sup>	12/2012	✓	✓	✓	✓	✓	✓	-	✓	✓
	SEE	SIM Arte U-50h	9,3	07/2019	✓	✓	✓	✓	✓	✓	✓	✓
SIM Arte U-70h		11,4	07/2019	✓	✓	✓	✓	✓	✓	✓	✓	✓
SIM Arte 3RL-60h		10,0	08/2019	✓	✓	✓	✓	✓	✓	✓	✓	✓
POSEIDON		9,5	09/2021	✓	✓	✓	✓	✓	✓	✓	✓	✓
APOLLON 2L / 2R		9,8	09/2021	✓	✓	✓	✓	✓	✓	✓	✓	✓
ARES		10,0	09/2021	✓	✓	✓	✓	✓	✓	✓	✓	✓
ARES mit S-Thermatik		10,0	09/2021	✓	✓	✓	✓	✓	✓	✓	✓	✓
ARTEMIS		9,3	09/2021	✓	✓	✓	✓	✓	✓	✓	✓	✓
ARTEMIS mit S-Thermatik		9,3	09/2021	✓	✓	✓	✓	✓	✓	✓	✓	✓

# Auslaufmodelle

Anforderungen	Spalte	Anforderungen	Staub	CO	Wirkungsgrad in %			NOx	CnHm
					Einsatz	Ofen	Kachel-ofen		
Anforderungen	I	geprüft nach DIN EN 13229 / 13240		1% (12500mg/Nm³)	30	50	30	-	-
	II	DIN plus (für Kamineinsätze / Kaminöfen) Juni 2008	75 mg/Nm³	1500 mg/Nm³	72	75	72	200 mg/Nm³	120 mg/Nm³
		DIN plus (für Kaminöfen) September 2011	40 mg/Nm³	1250 mg/Nm³	-	78	-	200 mg/Nm³	120 mg/Nm³
	III	2. Stufe BImSchV. 2010. ab Inkrafttreten 31.12.2014	40 mg/Nm³	1250 mg/Nm³	75	73	75	-	-
	IV	BStV München	40 mg/Nm³	1250 mg/Nm³	75			200 mg/m³	-
		BStV München (für Pelletöfen)	30 mg/Nm³	250 mg/Nm³	85			200 mg/m³	-
	V	Art. 15a B-VG: Österreich	35 mg/MJ	1100 mg/MJ	80			150 mg/MJ	50 mg/MJ
		Art. 15a B-VG: Österreich (für Pelletöfen)	25 mg/MJ	500 mg/MJ	-	80	-	100 mg/MJ	30 mg/MJ
VI	Schweiz: Erfüllungen ab 01.01.2011	75 mg/Nm³	1500 mg/Nm³	-			-	-	
VII	Luftreinhaltungsverordnung Schweinfurt	40 mg/Nm³	1250 mg/Nm³	78			200 mg/Nm³	120 mg/Nm³	

Modellname	NWL in kW	Prüfungsdatum	Wirkungsgrad in %							VIII	
			I	II	III	IV	V	VI	VII		
Kamineinsätze	Mini R1V	5,0	07/2012	✓	✓	✓	✓	✓	✓	✓	✓
	Mini R1V N	6,2	07/2012	✓	✓	✓	✓	✓	✓	✓	✓
	Mini R1V RLU	5,2	07/2012	✓	✓	✓	✓	✓	✓	✓	✓
	Mini R1V/R1Vh	5,0	10/1999	-	-	-	-	-	-	✓	-
	Mini R1Vh	5,0	07/2012	✓	✓	✓	✓	✓	✓	✓	✓
	Mini R1Vh N	6,2	07/2012	✓	✓	✓	✓	✓	✓	✓	✓
	Mini Z1-7,0 kW	7,0	07/2006	✓	✓	✓	✓	✓	✓	✓	✓
	Mini Z1-10,0 kW N	10,0	07/2003	-	✓	✓	✓	✓	-	✓	✓
	Mini Z1-10,0 kW N	10,0	07/2006	✓	✓	✓	✓	✓	✓	✓	✓
	Mini Z1 RLU	7,0	09/2012	✓	✓	✓	✓	✓	-	✓	✓
	Mini Z1 H <sub>2</sub> O	7,0/5,5 <sup>1</sup>	01/2009	✓	✓	✓	✓	✓	✓	✓	✓
	Mini Z1 H <sub>2</sub> O-XL	10,0/8,0 <sup>1</sup>	01/2009	✓	✓	✓	✓	✓	✓	✓	✓
	Mini Z1 H <sub>2</sub> O RLU	7,0/5,5 <sup>1</sup>	01/2013	✓	✓	✓	✓	✓	✓	✓	✓
	Mini Z1 H <sub>2</sub> O XL RLU	10,0/8,0 <sup>1</sup>	01/2013	✓	✓	✓	✓	✓	✓	✓	✓
	Mini Z1 H <sub>2</sub> O XL	10,0/8,0 <sup>1</sup>	01/2009	✓	✓	✓	✓	✓	✓	✓	✓
	Mini S	7,0	09/2009	✓	✓	✓	✓	✓	-	✓	✓
	Mini Sh	7,0	06/2005	✓	✓	✓	✓	✓	✓*	✓	✓
	Mini Sh 42	5,0	11/2006	✓	✓	✓	✓	✓	-	✓	✓
	Mini S-FDh	6,0	08/2008	✓	✓	✓	✓	✓	✓*	✓	✓
	Mini 2L / 2R / 2LRh	5,0	10/1999	-	-	-	✓	-	-	✓	-
	Mini 2L / 2R / 2LRh	7,0	01/2008	✓	✓	✓	✓	✓	-	✓	✓
	Mini 2L / 2R	7,0	04/2015	✓	✓	✓	✓	✓	✓	✓	✓
	Mini 2L / 2R Export	11,0	04/2015	✓	✓	✓	✓	✓	-	✓	-
	Mini 2LRh	11,0	04/2015	✓	✓	✓	✓	✓	-	✓	-
	Mini M1 G2	2,8	09/2007	✓	✓	✓	✓	✓	-	✓	✓
	Mini M1 G3	3,0	09/2007	✓	✓	✓	✓	✓	-	✓	✓
	Mini M1 G4	3,2	09/2007	✓	✓	✓	✓	✓	-	✓	✓
	Mini M1 GL / GR	3,3	09/2007	✓	✓	✓	✓	✓	-	✓	✓
	Mini M2 G2	4,1	09/2007	✓	✓	✓	✓	✓	✓	✓	✓
	Mini M2 G3	4,7	09/2007	✓	✓	✓	✓	✓	✓	✓	✓
	Mini M2 G4	5,1	09/2007	✓	✓	✓	✓	✓	✓	✓	✓
	Mini M2 GL / GR	5,3	09/2007	✓	✓	✓	✓	✓	✓	✓	✓
Speedy 1V	9,0	08/2013	✓	✓	✓	✓	✓	✓	✓	✓	
Speedy 1V RLU	9,0	10/2013	✓	✓	✓	✓	✓	✓	✓	✓	
Speedy 1V N	10,0	08/2013	✓	✓	✓	✓	✓	✓	✓	✓	
Speedy 1V Export	14,5	08/2013	✓	✓	✓	✓	✓	✓*	✓	✓	
Speedy 1Vh	9,0	08/2013	✓	✓	✓	✓	✓	✓	✓	✓	
Speedy 1Vh N	10,0	08/2013	✓	✓	✓	✓	✓	✓	✓	✓	

# Auslaufmodelle

Anforderungen	Spalte	Anforderungen	Staub	CO	Wirkungsgrad in %			NOx	CnHm
					Einsatz	Ofen	Kochel-ofen		
I		geprüft nach DIN EN 13229 / 13240		1% (12500mg/Nm³)	30	50	30	-	-
II		DIN plus (für Kamineinsätze / Kaminöfen) Juni 2008	75 mg/Nm³	1500 mg/Nm³	72	75	72	200 mg/Nm³	120 mg/Nm³
		DIN plus (für Kaminöfen) September 2011	40 mg/Nm³	1250 mg/Nm³	-	78	-	200 mg/Nm³	120 mg/Nm³
III		2. Stufe BlmSchV. 2010. ab Inkrafttreten 31.12.2014	40 mg/Nm³	1250 mg/Nm³	75	73	75	-	-
IV		BStV München	40 mg/Nm³	1250 mg/Nm³	75	73	80	200 mg/m³	-
		BStV München (für Pelletöfen)	30 mg/Nm³	250 mg/Nm³		85		200 mg/m³	-
V		Art. 15a B-VG: Österreich	35 mg/MJ	1100 mg/MJ		80		150 mg/MJ	50 mg/MJ
		Art. 15a B-VG: Österreich (für Pelletöfen)	25 mg/MJ	500 mg/MJ	-	80	-	100 mg/MJ	30 mg/MJ
VI		Schweiz: Erfüllungen ab 01.01.2011	75 mg/Nm³	1500 mg/Nm³				-	-
VII		Luftreinhalteverordnung Schweinfurt	40 mg/Nm³	1250 mg/Nm³		78		200 mg/Nm³	120 mg/Nm³

Kamineinsätze	Modellname	NWL in kW	Prüfungsdatum	I	II	III	IV	V	VI	VII
				Speedy 1Vh Export	14,5	08/2013	✓	✓	✓	✓
Speedy M / Mh / MR / MRh	8,0	08/2002	-	✓	✓	✓	-	-	✓	✓
Speedy MR	9,0	11/2010	✓	✓	✓	✓	✓	✓	✓	✓
Speedy MR S	7,0	07/2011	✓	✓	✓	✓	✓	✓	✓	✓
Speedy MRh	9,0	11/2010	✓	✓	✓	✓	✓	✓	✓	✓
Speedy MRh S	7,0	07/2011	✓	✓	✓	✓	✓	✓	✓	✓
Speedy MDRh	9,0	03/2008	✓	✓	✓	✓	✓*	✓	✓	✓
Speedy MDRh (geschlossener Betrieb)	9,0	03/1998	✓	✓	-	-	-	-	✓	-
Speedy M	8,0	09/2011	✓	✓	✓	✓	✓	✓	✓	✓
Speedy M N	9,0	02/2002	✓	✓	✓	✓	✓	✓	✓	✓
Speedy Mh	8,0	09/2011	✓	✓	✓	✓	✓	✓	✓	✓
Speedy Mh N	9,0	02/2002	✓	✓	✓	✓	✓	✓	✓	✓
Speedy E / Eh / E-FD / E-FDh	7,9	04/2007	✓	-	-	-	-	-	✓	-
Speedy E / Eh / E-FD / E-FDh mit N	11,0	09/1996	-	-	-	-	-	-	✓	-
Speedy E	8,0	04/1996	-	-	-	-	-	-	-	-
Speedy Ph	7,0	03/2007	✓	-	-	-	-	-	✓	-
Speedy Ph	7,0	03/2000	-	-	-	-	-	-	✓	-
Speedy RDRh	11,0	02/2002	-	-	-	-	-	-	-	-
Speedy RDRh	11,0	03/2007	✓	-	-	-	-	-	✓	-
Speedy DRh	11,0	03/1998	-	-	-	-	-	-	-	-
Speedy R	9,0	08/2002	✓	✓	✓	✓	✓*	✓	✓	✓
Speedy R N	10,0	04/2006	✓	✓	✓	✓	✓	✓	✓	✓
Speedy Rh	9,0	08/2002	✓	✓	✓	✓	✓*	✓	✓	✓
Speedy Rh N	10,0	04/2006	✓	✓	✓	✓	✓	✓	✓	✓
Speedy K	9,0	08/2002	✓	✓	✓	✓	✓*	✓	✓	✓
Speedy K N	10,0	04/2006	✓	✓	✓	✓	✓	✓	✓	✓
Speedy Kh	9,0	08/2002	✓	✓	✓	✓	✓*	✓	✓	✓
Speedy Kh N	10,0	04/2006	✓	✓	✓	✓	✓	✓	✓	✓
Varia 1V-100h Export	17,0	08/2014	✓	✓	✓	✓	✓	✓	✓	✓
Varia 1V / 1Vh / FD / FDh	11,0	08/2002	✓	✓	✓	✓	-	-	✓	✓
Varia 1V / 1Vh / 1Vh	11,0	06/2013	✓	✓	✓	✓	-	-	✓	✓
Varia 1V / 1Vh / 1Vh	11,0	06/2013	✓	✓	✓	✓	✓	✓	✓	✓
Varia 1V / 1Vh / 1Vh	7,0	11/2010	✓	✓	✓	✓	✓	✓	✓	✓
Varia 1Vh / 1Vh	11,0	08/2002	✓	✓	✓	✓	-	-	✓	✓
Varia 1V / 1Vh / 1Vh Export	17,5	06/2013	✓	✓	✓	✓	-	-	✓	✓
Varia 1V / 1Vh / 1Vh Export	17,5	06/2013	✓	✓	✓	✓	✓*	✓	✓	✓
Varia 1V H <sub>2</sub> O XL RLU	14,4/10,0 <sup>1</sup>	01/2013	✓	✓	✓	✓	-	-	✓	✓
Varia 1V H <sub>2</sub> O XL Export	12,0/8,5 <sup>1</sup>	07/2013	✓	✓	✓	✓	✓	✓	✓	✓

# Auslaufmodelle

Kamineinsätze	Modellname	NWL in kW	Prüfungsdatum	I	II	III	IV	V	VI	VII
				Varia 1V / 1Vh H <sub>2</sub> O	11,0	06/2008	✓	✓	✓	✓
Varia 1V H <sub>2</sub> O Export	11,0/6,0 <sup>1</sup>	07/2013	✓	✓	✓	✓	✓	✓	✓	✓
Varia 1Vh H <sub>2</sub> O Export	11,0/6,0 <sup>1</sup>	07/2013	✓	✓	✓	✓	✓	✓	✓	✓
Varia 1V / 1Vh H <sub>2</sub> O S	6,0	07/2010	✓	✓	✓	✓	✓	✓	✓	✓
Varia 1V / 1Vh H <sub>2</sub> O XL	14,4	11/2008	✓	✓	✓	✓	-	-	✓	✓
Varia 1V / 1Vh H <sub>2</sub> O XS	9,0	07/2010	✓	✓	✓	✓	✓	✓	✓	✓
Varia 1V H <sub>2</sub> O XL	15,0	07/2013	✓	✓	✓	✓	✓	✓	✓	✓
Varia 1Vh H <sub>2</sub> O XL Export	12,0/8,5 <sup>1</sup>	07/2013	✓	✓	✓	✓	✓	✓	✓	✓
Varia 1V / 1Vh H <sub>2</sub> O XXL	21,2	11/2008	✓	-	-	-	-	-	✓	-
Varia 1V / 1Vh H <sub>2</sub> O XXL RLU	21,2/15,6 <sup>1</sup>	01/2013	✓	-	-	-	-	-	✓	-
Varia 1V H <sub>2</sub> O XXL Export	21,0/15,0 <sup>1</sup>	07/2013	✓	✓	✓	✓	✓	✓	✓	✓
Varia 1Vh H <sub>2</sub> O XXL Export	21,0/15,0 <sup>1</sup>	07/2013	✓	✓	✓	✓	✓	✓	✓	✓
Varia 1V S RLU 7 kW	7,0	09/2012	✓	✓	✓	✓	✓	✓	✓	✓
Varia 1VX H <sub>2</sub> O	10,0/6,4 <sup>1</sup>	04/2015	✓	✓	✓	✓	✓	✓	✓	✓
Varia 1VX H <sub>2</sub> O Export	15,0/9,4 <sup>1</sup>	04/2015	✓	✓	✓	✓	✓	✓	✓	✓
Varia 1VX H <sub>2</sub> O Export	21,0/9,7 <sup>1</sup>	04/2015	✓	✓	✓	✓	✓	✓	✓	✓
Varia 1VXh H <sub>2</sub> O	10,0/6,4 <sup>1</sup>	04/2015	✓	✓	✓	✓	✓	✓	✓	✓
Varia 1VXh H <sub>2</sub> O Export	15,0/9,4 <sup>1</sup>	04/2015	✓	✓	✓	✓	✓	✓	✓	✓
Varia 1VXh H <sub>2</sub> O Export	21,0/9,7 <sup>1</sup>	04/2015	✓	✓	✓	✓	✓	✓	✓	✓
Varia S / Sh / SR / SRh -A1	11,0	09/1999	-	-	-	-	-	-	-	-
Varia S / Sh / SR / SRh -A	11,0	10/1999	-	-	-	-	-	-	✓	-
Varia S / Sh / SR / SRh / Eh / E-FDh / Qh	11,0	04/2007	✓	✓	-	-	-	✓*	✓	-
Varia AS Export	11,0	05/2013	✓	✓	✓	✓	✓	✓	✓	✓
Varia ASH Export	11,0	05/2013	✓	✓	✓	✓	✓	✓	✓	✓
Varia ASH	7,0	02/2013	✓	✓	✓	✓	✓	✓	✓	✓
Varia ASH N	11,0	04/2013	✓	✓	✓	✓	✓	✓	✓	✓
Varia ASH / AS-FD NHSF / AS-FD Export	11,0	05/2013	✓	✓	✓	✓	✓	✓	✓	✓
Varia AS-FD / AS-FDh	7,0	05/2013	✓	✓	✓	✓	✓	✓	✓	✓
Varia AS-FDh N / AS-FDh Export	11,0	05/2013	✓	✓	✓	✓	✓	✓	✓	✓
Varia AS-FD RLU	7,0	12/2013	✓	✓	✓	✓	✓	✓	✓	✓
Varia AS-FDh Export	11,0	05/2013	✓	✓	✓	✓	✓	✓	✓	✓
Varia AS-3RLh Export	11,7	03/2016	✓	✓	✓	✓	✓	✓	✓	✓
Varia Ah / A-FDh	11,0	12/2004	-	-	-	-	-	-	✓	-
Varia Ah	10,4	12/2011	✓	✓	✓	✓	✓	✓	✓	✓
Varia Ah / Ah	9,0	07/2012	✓	✓	✓	✓	✓	-	✓	✓
Varia Ah H <sub>2</sub> O Export	14,0/9,8 <sup>1</sup>	01/2012	✓	✓	✓	✓	✓	✓	✓	✓
Varia Bh / BEh	11,0	02/2002	-	-	-	-	-	-	✓	-
Varia Bh	10,4	07/2012	✓	✓	✓	✓	✓*	✓	✓	✓
Varia Bh	9,0	07/2012	✓	✓	✓	✓	✓*	✓	✓	✓
Varia B-120h	15,0	10/2010	✓	✓	✓	✓	✓*	✓	✓	✓
Varia Eh	11,0	09/1999	✓	✓	-	-	-	✓*	✓	-
Varia M-60h	7,0	10/2008	✓	✓	✓	✓	✓*	✓	✓	✓
Varia M-80h	9,0	10/2008	✓	✓	✓	✓	✓*	✓	✓	✓
Varia M-100h	11,0	04/2008	✓	-	-	-	-	-	✓	-
Varia M-100h GET / GET + DH	10,4	02/2012	✓	✓	✓	✓	✓	✓	✓	✓
Varia FDh	11,6	04/2016	✓	✓	✓	✓	✓	✓	✓	✓
Varia FD H <sub>2</sub> O Export	15,0/9,4 <sup>1</sup>	04/2015	✓	✓	✓	✓	✓	✓	✓	✓
Varia FD H <sub>2</sub> O Export	21,0/9,7 <sup>1</sup>	04/2015	✓	✓	✓	✓	✓	✓	✓	✓
Varia FDh H <sub>2</sub> O Export	15,0/9,4 <sup>1</sup>	04/2015	✓	✓	✓	✓	✓	✓	✓	✓
Varia FDh H <sub>2</sub> O Export	21,0/9,7 <sup>1</sup>	04/2015	✓	✓	✓	✓	✓	✓	✓	✓
Varia A-FDh	10,4	07/2012	✓	✓	✓	✓	✓	✓	✓	✓



# Auslaufmodelle

Anforderungen	Spalte	Anforderungen	Staub	CO	Wirkungsgrad in %			NOx	CnHm
					Einsatz	Ofen	Kochel- ofen		
I	geprüft nach DIN EN 13229 / 13240			1% (12500mg/Nm³)	30	50	30	-	-
					72	75	72	200 mg/Nm³	120 mg/Nm³
II	DIN plus (für Kamineinsätze / Kaminöfen) Juni 2008		75 mg/Nm³	1500 mg/Nm³	-	78	-	200 mg/Nm³	120 mg/Nm³
					40 mg/Nm³	1250 mg/Nm³	-	78	-
III	2. Stufe BImSchV. 2010. ab Inkrafttreten 31.12.2014		40 mg/Nm³	1250 mg/Nm³	75	73	75	-	-
IV	BStV München		40 mg/Nm³	1250 mg/Nm³	75	73	80	200 mg/m³	-
					30 mg/Nm³	250 mg/Nm³	85	200 mg/m³	-
V	Art. 15a B-VG: Österreich		35 mg/MJ	1100 mg/MJ	-	80	-	150 mg/MJ	50 mg/MJ
					25 mg/MJ	500 mg/MJ	-	80	-
VI	Schweiz: Erfüllungen ab 01.01.2011		75 mg/Nm³	1500 mg/Nm³	-	-	-	-	-
VII	Luftreinhalteverordnung Schweinfurt		40 mg/Nm³	1250 mg/Nm³	-	78	-	200 mg/Nm³	120 mg/Nm³

Modellname	NWL in kW	Prüfungsdatum	I	II	III	IV	V	VI	VII
Varia A-FDh H <sub>2</sub> O Export	15,0/9,0 <sup>1</sup>	12/2011	✓	✓	✓	✓	✓	✓	✓
Varia Bh	9,0	02/2012	✓	✓	✓	✓	✓*	✓	✓
Varia B-FDh	11,0	01/2008	✓	✓	✓	✓	✓*	✓	✓
Varia Sh	11,0	09/2011	✓	✓	✓	✓	✓	✓	✓
Varia Sh RLU	11,0	09/2017	✓	✓	✓	✓	✓	✓	✓
Varia 2L / 2R	11,0	01/2010	✓	✓	✓	✓	✓	✓	✓
Varia 2L / 2R	7,0	07/2011	✓	✓	✓	✓	✓*	✓	✓
Varia 2L N	12,0	09/2011	✓	✓	✓	✓	✓	✓	✓
Varia 2L-80h	10,4	01/2013	✓	✓	✓	✓	✓	✓	✓
Varia 2L-100h	11,0	03/2008	✓	✓	✓	✓	✓	✓*	✓
Varia 2Lh	7,0	07/2011	✓	✓	✓	✓	✓*	✓	✓
Varia 2Lh H <sub>2</sub> O Export	14,7/10,4 <sup>1</sup>	01/2010	✓	✓	✓	✓	✓	✓	✓
Varia 2L-80h Export	16,0	01/2013	✓	✓	✓	✓	-	✓	✓
Varia 2L / 2R-50	7,0	08/2017	✓	✓	✓	✓	✓	✓	✓
Varia 2L / 2R-50h	7,0	08/2017	✓	✓	✓	✓	✓	✓	✓
Varia 2L / 2R-55	7,0	03/2012	✓	✓	✓	✓	✓	✓	✓
Varia 2L / 2R-55h	7,0	03/2012	✓	✓	✓	✓	✓	✓	✓
Varia 2L / 2R-55h GET / GET +DH	7,0	04/2011	✓	✓	✓	✓	✓	✓	✓
Varia 2LR / 2RR / 2L / 2R	11,0	11/1999	-	-	-	-	-	✓	-
Varia 2LRh / 2RRh / 2Lh / 2Rh	11,0	11/1999	-	-	-	-	-	✓	-
Varia 2LR / 2RR-55h	7,0	08/2014	✓	✓	✓	✓	✓	✓	✓
Varia 2L- / 2R-55h H <sub>2</sub> O Export	12,0 <sup>1</sup>	02/2013	✓	✓	✓	✓	-	✓	✓
Varia 2L RLU / 2R RLU	11,0	09/2010	✓	✓	✓	✓	✓	✓	✓
Varia 2L RLU / 2R RLU	7,0	09/2010	✓	✓	✓	✓	-	✓	✓
Varia 2LRh	7,0	07/2011	✓	✓	✓	✓	✓*	✓	✓
Varia 2LRh	11,0	01/2010	✓	✓	✓	✓	✓	✓	✓
Varia 2LRh N	12,0	09/2011	✓	✓	✓	✓	✓	✓	✓
Varia 2R-80h	10,4	01/2013	✓	✓	✓	✓	✓	✓	✓
Varia 2R-80h Export	16,0	01/2013	✓	✓	✓	✓	-	✓	✓
Varia 2R-100h	11,0	03/2008	✓	✓	✓	✓	✓	✓*	✓
Varia 2RRh	11,0	01/2010	✓	✓	✓	✓	✓	✓	✓
Varia 2R N / 2RRh N	12,0	09/2011	✓	✓	✓	✓	✓	✓	✓
Varia 2Rh	7,0	07/2011	✓	✓	✓	✓	✓*	✓	✓
Varia 2Rh H <sub>2</sub> O Export	14,7 <sup>1</sup>	01/2010	✓	✓	✓	✓	✓	✓	✓
Varia 2RRh	7,0	07/2011	✓	✓	✓	✓	✓*	✓	✓
Varia 3RL / 3RLh	9,0	07/2006	✓	✓	✓	✓	✓	✓	✓
Varia C-45h	8,0	01/2011	✓	✓	✓	✓	✓	✓	✓
Arte 1Vh	8,0	08/2007	✓	✓	✓	✓	✓	✓	✓

# Auslaufmodelle

Modellname	NWL in kW	Prüfungsdatum	I	II	III	IV	V	VI	VII
Arte 1Vh / Sh	8,0	03/1998	✓	✓	-	-	-	✓	-
Arte 1Vh-66 Export	14,0	11/2015	✓	✓	✓	✓	✓	✓	✓
Arte 2LRh-66	6,4	08/2015	✓	✓	✓	✓	✓	✓	✓
Arte 2LRh-66 Export	12,0	07/2015	✓	✓	✓	✓	✓	✓	✓
Arte 3RL-60h	7,5	07/2010	✓	✓	✓	✓	✓	✓	✓
Arte 3RL-60h Export	13,4	07/2018	✓	✓	✓	✓	✓	✓	✓
Arte 3RL-80h	9,0	07/2010	✓	✓	✓	✓	✓	✓	✓
Arte Bh	11,0	10/1999	-	-	-	-	-	-	-
Arte Bh	11,0	01/2008	✓	✓	✓	✓	✓*	✓	✓
Arte BR/h	11,0	02/2002	-	-	-	-	-	✓	✓
Arte BRh	11,0	01/2008	-	✓	✓	✓	✓*	✓	✓
Arte Xh / X-FDh	11,0	10/2011	✓	✓	✓	✓	✓*	✓	✓
Arte F-1V	5,9	02/2013	✓	✓	✓	✓	✓	✓	✓
Arte F-1V N	9,4	07/2013	✓	✓	✓	✓	✓	✓	✓
Arte F-1V Export	9,4	02/2013	✓	✓	✓	✓	✓	✓	✓
Arte F-1Vh	5,9	02/2013	✓	✓	✓	✓	✓	✓	✓
Arte F-1Vh N	9,4	07/2013	✓	✓	✓	✓	✓	✓	✓
Arte F-1Vh Export	9,4	02/2013	✓	✓	✓	✓	✓	✓	✓
Arte F-FD	5,9	04/2013	✓	✓	✓	✓	✓	✓	✓
Arte F-FD N	9,4	04/2013	✓	✓	✓	✓	✓	✓	✓
Arte F-FD Export	9,4	04/2013	✓	✓	✓	✓	✓	✓	✓
Arte F-FDh	5,9	04/2013	✓	✓	✓	✓	✓	✓	✓
Arte F-FDh N	9,4	04/2013	✓	✓	✓	✓	✓	✓	✓
Arte F-FDh Export	9,4	04/2013	✓	✓	✓	✓	✓	✓	✓
Arte O	6,0	03/2004	✓	✓	✓	✓	-	✓	✓
Arte Wh	11,0	12/2008	✓	✓	✓	✓	-	✓	✓
Arte U-50h	9,0	02/2009	✓	✓	✓	✓	✓	✓	✓
Arte U-70h	11,0	09/2008	✓	✓	✓	✓	✓	✓	✓
Arte U-70h Export	15,6	07/2018	✓	✓	✓	✓	✓	✓	✓
Bravo / Bravo h	8,0	01/2006	✓	✓	✓	✓	✓	✓	✓
Bravo / Bravo h mit N	9,0	01/2006	✓	✓	✓	✓	✓	✓	✓
Prismo / Rundo 550	7,0	12/2007	✓	✓	-	-	-	✓	-
Prismo / Rundo 550 mit N	8,0	12/2007	✓	✓	-	-	-	✓	-
Prismo / Rundo 650	8,0	12/2007	✓	✓	-	-	-	✓	-
Prismo / Rundo 650 mit N	9,0	12/2007	✓	✓	-	-	-	✓	-
Prismo 770	9,0	12/2007	✓	✓	-	-	-	✓	-
Prismo 770 mit N	10,0	12/2007	✓	✓	-	-	-	✓	-
Magic	12,0	05/2014	✓	✓	✓	✓	✓	✓	✓
Renova B-Air	8,8	06/2011	✓	✓	✓	✓	✓	✓	✓
Nova F-Air	10,1	06/2011	✓	✓	✓	✓	✓	✓	✓
Kaminkassette groß	8,0	06/2000	✓	✓	-	-	-	✓	-
Kaminkassette klein	6,0	04/2007	✓	✓	-	-	-	✓	-
Linear Kassette XS 500 E4	4,6	08/2014	✓	✓	✓	✓	✓	✓	✓
Linear Kassette XS 500 D4	4,0	08/2014	✓	✓	✓	✓	✓	✓	✓
Linear Kassette S 600 E5	4,9	01/2012	✓	✓	✓	✓	✓	✓	✓
Linear Kassette S 600 D5	4,9	01/2012	✓	✓	✓	✓	✓	✓	✓
Linear Kassette M 700 E7	6,9	01/2012	✓	✓	✓	✓	✓	✓	✓
Linear Kassette M 700 D6	5,9	01/2012	✓	✓	✓	✓	✓	✓	✓
Linear Kassette L 800 E10	9,9	01/2012	✓	✓	✓	✓	✓	✓	✓

# Auslaufmodelle

Anforderungen	Spalte	Anforderungen	Staub	CO	Wirkungsgrad in %			NOx	CnHm
					Einsatz	Ofen	Kachel- ofen		
I		geprüft nach DIN EN 13229 / 13240		1% (12500mg/Nm³)	30	50	30	-	-
II		DIN plus (für Kamineinsätze / Kaminöfen) Juni 2008	75 mg/Nm³	1500 mg/Nm³	72	75	72	200 mg/Nm³	120 mg/Nm³
		DIN plus (für Kaminöfen) September 2011	40 mg/Nm³	1250 mg/Nm³	-	78	-	200 mg/Nm³	120 mg/Nm³
III		2. Stufe BImSchV. 2010. ab Inkrafttreten 31.12.2014	40 mg/Nm³	1250 mg/Nm³	75	73	75	-	-
IV		BStV München	40 mg/Nm³	1250 mg/Nm³	75	73	80	200 mg/m³	-
		BStV München (für Pelletöfen)	30 mg/Nm³	250 mg/Nm³			85	200 mg/m³	-
V		Art. 15a B-VG: Österreich	35 mg/MJ	1100 mg/MJ			80	150 mg/MJ	50 mg/MJ
		Art. 15a B-VG: Österreich (für Pelletöfen)	25 mg/MJ	500 mg/MJ	-	80	-	100 mg/MJ	30 mg/MJ
VI		Schweiz: Erfüllungen ab 01.01.2011	75 mg/Nm³	1500 mg/Nm³				-	-
VII		Luftreinhalteverordnung Schweinfurt	40 mg/Nm³	1250 mg/Nm³		78		200 mg/Nm³	120 mg/Nm³

Kamin- kassetten	Modellname	NWL in kW	Prüfungs- datum	I	II	III	IV	V	VI	VII
Linear Kasette XL 900 E14	14,0	01/2012	✓	✓	✓	✓	-	✓	✓	✓
Linear Kasette XL 900 D11	10,5	01/2012	✓	✓	✓	✓	-	✓	✓	✓
ambiente K1	ambiente K1	7,0	02/2005	✓	-	-	-	-	✓	-
	ambiente K1	9,0	02/2006	✓	✓	✓	✓	✓	✓	✓
ambiente a1	5,9	01/2010	✓	✓	✓	✓	✓	✓	✓	✓
ambiente a1 RLU	5,9	03/2010	✓	✓	✓	✓	✓	✓	✓	✓
ambiente a2	5,9	01/2010	✓	✓	✓	✓	✓	✓	✓	✓
ambiente a2 RLU	5,9	03/2010	✓	✓	✓	✓	✓	✓	✓	✓
ambiente a5	7,0	07/2012	✓	✓	✓	✓	✓	✓	✓	✓
ambiente a5	5,9	07/2015	✓	✓	✓	✓	✓	✓	✓	✓
ambiente a6	5,9	06/2015	✓	✓	✓	✓	✓	✓	✓	✓
ambiente a6 H <sub>2</sub> O	7,9/4,9 <sup>1</sup>	02/2015	✓	✓	✓	✓	✓	✓	✓	✓
ambiente a6 H <sub>2</sub> O Export	11,0/6,8 <sup>1</sup>	02/2015	✓	✓	✓	✓	✓	✓	✓	✓
ambiente a9	5,9	09/2018	✓	✓	✓	✓	✓	✓	✓	✓
Century	9,0	10/2001	✓	-	-	-	-	✓	-	-
Cubo	5,0	03/2009	✓	✓	✓	✓	-	✓	✓	✓
Cubo S / L / L mit Holzfach	5,9	02/2011	✓	✓	✓	✓	✓	✓	✓	✓
Cubo S / L RLU	5,9	10/2012	✓	✓	✓	✓	-	✓	✓	✓
Cubo M mit Holzfach	6,9	01/2012	✓	✓	✓	✓	✓	✓	✓	✓
Cubo M	6,0	03/2011	✓	✓	✓	✓	✓	✓	✓	✓
Cubo M	5,9	07/2014	✓	✓	✓	✓	✓	✓	✓	✓
Cubo M RLU	5,9	03/2011	✓	✓	✓	✓	✓	✓	✓	✓
Linear Module XS Export	4,6	08/2014	✓	✓	✓	✓	✓	✓	✓	✓
Modul S / M / L	7,0	07/2006	✓	-	-	-	-	✓	-	-
Modul 2S / 2M / 2L-L / 2L-LR / 2L-R	6,2	12/2009	✓	✓	✓	✓	✓	✓	✓	✓
Modul 2L / 2.2	6,2	01/2010	✓	✓	✓	✓	✓	✓	✓	✓
Moro Export	12,0	07/2014	✓	✓	✓	✓	✓	✓	✓	✓
Noto	7,0	08/2014	✓	✓	✓	✓	✓	✓	✓	✓
Sino City Export	10,0	07/2014	✓	✓	✓	✓	-	✓	✓	✓
Passo XS	5,0	06/2013	✓	✓	✓	✓	-	✓	-	-
Passo XS RLU	5,0	10/2013	✓	✓	✓	✓	-	✓	-	-
Passo XS style	5,0	04/2019	✓	✓	✓	✓	-	✓	-	-
Passo XS tripod	5,0	05/2019	✓	✓	✓	✓	-	✓	-	-
Passo M	6,1	06/2015	✓	✓	✓	✓	✓	✓	✓	✓
Passo M	7,4	05/2011	✓	✓	✓	✓	✓	✓	✓	✓
Passo M Export	10,0	06/2016	✓	✓	✓	✓	-	✓	✓	✓
Passo M RLU	6,1	01/2016	✓	✓	✓	✓	✓	✓	✓	✓

# Auslaufmodelle

Modellname	NWL in kW	Prüfungs- datum	I	II	III	IV	V	VI	VII	
										Passo S / L Export
Petit	5,0	06/2006	✓	✓	✓	✓	-	✓	✓	
Piko	5,0	02/2005	✓	✓	✓	✓	-	✓	✓	
Piko S / L / L mit Holzfach	5,9	02/2011	✓	✓	✓	✓	✓	✓	✓	
Piko S / L RLU	5,9	10/2012	✓	✓	✓	✓	✓	✓	✓	
Piko M	5,9	07/2014	✓	✓	✓	✓	✓	✓	✓	
Piko M RLU	5,9	03/2011	✓	✓	✓	✓	✓	✓	✓	
Piko M mit Holzfach	5,9	01/2012	✓	✓	✓	✓	✓	✓	✓	
Piko Frame	5,9	01/2019	✓	✓	✓	✓	✓	✓	✓	
Piu / Piu 05 / Aura	7,0	06/1999	✓	-	-	-	-	✓	-	
Polo / Passo S / Passo L	7,0	11/2005	✓	✓	✓	✓	✓	✓	✓	
Redoro S / M	5,9	05/2015	✓	✓	✓	✓	✓	✓	✓	
Riva	7,0	09/2006	✓	-	-	-	-	✓	-	
Senso / Senso L	7,0	12/2008	✓	✓	✓	✓	-	✓	✓	
Senso L	7,0	09/2015	✓	✓	✓	✓	✓	✓	✓	
Senso L RLU	7,0	01/2016	✓	✓	✓	✓	✓	✓	✓	
Senso L klassik	7,0	07/2019	✓	✓	✓	✓	✓	✓	✓	
Senso L klassik RLU	7,0	01/2020	✓	✓	✓	✓	✓	✓	✓	
Senso L fashion	7,0	07/2019	✓	✓	✓	✓	✓	✓	✓	
Senso L fashion RLU	7,0	01/2020	✓	✓	✓	✓	✓	✓	✓	
Senso S RLU	7,0	08/2011	✓	✓	✓	✓	✓	✓	✓	
SEO S	5,1	08/2017	✓	✓	✓	✓	✓	✓	✓	
SEO S RLU	5,1	08/2017	✓	✓	✓	✓	✓	✓	✓	
SEO S leva	5,1	07/2018	✓	✓	✓	✓	✓	✓	✓	
SEO S leva RLU	5,1	07/2018	✓	✓	✓	✓	✓	✓	✓	
SEO L	5,5	12/2017	✓	✓	✓	✓	✓	✓	✓	
SEO L RLU	5,5	12/2017	✓	✓	✓	✓	✓	✓	✓	
SEO L leva	5,1	07/2018	✓	✓	✓	✓	✓	✓	✓	
SEO L leva RLU	5,1	07/2018	✓	✓	✓	✓	✓	✓	✓	
Sino L	7,0	10/2011	✓	✓	✓	✓	-	✓	✓	
Sino City	5,0	07/2014	✓	✓	✓	✓	✓	✓	✓	
Sino City RLU	5,0	01/2016	✓	✓	✓	✓	✓	✓	✓	
Stovo S / Stovo M / Stovo L	5,0	08/2012	✓	✓	✓	✓	✓	✓	✓	
Stovo S plus	4,7	06/2015	✓	✓	✓	✓	✓	✓	✓	
Stovo L plus	4,7	06/2015	✓	✓	✓	✓	✓	✓	✓	
Square	6,0	03/2006	✓	-	-	-	-	✓	-	
Spirit	7,0	05/2008	✓	✓	✓	✓	-	✓	✓	
Trias / Trias L	7,0	10/2009	✓	✓	✓	✓	✓	✓	✓	
Kompaktanlagen	SIM Varia M-60h GET / GET + DH	8,0	02/2011	✓	✓	✓	✓	✓	✓	✓
	SIM Varia M-80h GET / GET + DH	9,0	02/2012	✓	✓	✓	✓	✓	✓	✓
	SIM Arte U-50h	9,0	02/2009	✓	✓	✓	✓	✓	✓	✓
	SIM Arte U-70h	11,0	01/2008	✓	✓	✓	✓	✓*	✓	✓
	SIM Arte 3RL-60h	7,5	07/2010	✓	✓	✓	✓	✓	✓	✓
	SIM Arte 3RL-80h	9,0	07/2010	✓	✓	✓	✓	✓	✓	✓
	SIM Arte 3RL-100h	11,0	08/2008	✓	✓	✓	✓	✓*	✓	✓
	SIM Mini 2LRh Export	11,0	04/2015	✓	✓	✓	✓	-	✓	-
	SIM Varia AS 2Lh Export	11,0	12/2013	✓	✓	✓	✓	-	✓	✓
	SIM Varia AS-2Rh Export	11,0	12/2013	✓	✓	✓	✓	-	✓	✓



# Auslaufmodelle

Anforderungen	Spalte	Anforderungen	Staub	CO	Wirkungsgrad in %			NOx	CnHm		
					Einsatz	Ofen	Kachel-ofen				
I	geprüft nach DIN EN 13229 / 13240			1 % (12500mg/Nm³)	30	50	30	-	-		
					72	75	72	200 mg/Nm³	120 mg/Nm³		
					40 mg/Nm³	1250 mg/Nm³	-	78	-	200 mg/Nm³	120 mg/Nm³
					40 mg/Nm³	1250 mg/Nm³	75	73	75	-	-
					40 mg/Nm³	1250 mg/Nm³	75	73	80	200 mg/m³	-
					30 mg/Nm³	250 mg/Nm³	85		200 mg/m³	-	
					35 mg/MJ	1100 mg/MJ	80		150 mg/MJ	50 mg/MJ	
25 mg/MJ	500 mg/MJ	-	80	-	100 mg/MJ	30 mg/MJ					
75 mg/Nm³	1500 mg/Nm³				-	-					
40 mg/Nm³	1250 mg/Nm³	78			200 mg/Nm³	120 mg/Nm³					

Modellname	NWL in kW	Prüfungsdatum	I	II	III	IV	V	VI	VII
Premium V-ASh	7,0	04/2015	✓	✓	✓	✓	✓	✓	✓
Premium V-ASh N	11,0	04/2015	✓	✓	✓	✓	✓	✓	✓
Premium V-ASh Export	11,0	04/2015	✓	✓	✓	✓	✓	✓	✓
Premium Varia M-80h GET/DH	9,0	05/2015	✓	✓	✓	✓	✓	✓	✓
Premium Varia 2L-55h GET/DH	7,0	06/2015	✓	✓	✓	✓	✓	✓	✓
Premium Varia 2R-55h GET/DH	7,0	06/2015	✓	✓	✓	✓	✓	✓	✓
Premium V-2L- / V-2R-80h Export	16,8	04/2017	✓	✓	✓	✓	✓	✓	✓
Premium Varia M-80h GET/DH	9,0	05/2015	✓	✓	✓	✓	✓	✓	✓
Premium Arte 3RL-60h	7,5	06/2015	✓	✓	✓	✓	✓	✓	✓
Premium A-3RL-60h Export	13,4	08/2017	✓	✓	✓	✓	✓	✓	✓
Premium A-U-70h Export	15,6	09/2017	✓	✓	✓	✓	✓	✓	✓
ARES (siehe Daten Arte 3RL-60h)	7,5	07/2010	✓	✓	✓	✓	✓	✓	✓
ARTEMIS (siehe Daten Arte U-70h)	11,0	09/2008	✓	✓	✓	✓	✓	✓	✓
ATHENE	6,0	05/2016	✓	✓	✓	✓	✓	✓	✓
AVENTIA (siehe Daten vom Arte 2LRh-66)	6,4	08/2015	✓	✓	✓	✓	✓	✓	✓
Loftline Modul 2.0 / 2.1 / 2.3 / 2.4 / 2.5	6,2	12/2009	✓	✓	✓	✓	✓	✓	✓
Natura Cano	8,0	07/2006	✓	✓	✓	✓	✓	-	✓
Natura Cano H <sub>2</sub> O	9,0 <sup>1</sup>	01/2008	✓	✓	-	-	✓	-	-
Natura Jora	8,0		-	-	-	✓	✓	✓	✓
Loftline Quader Q1	10,2	11/2009	✓	✓	✓	✓	✓	✓	✓
Loftline Helios M	6,0	02/2012	✓	✓	✓	✓	✓	✓	✓
Loftline Ambiente K2	6,0	07/2006	✓	-	-	-	-	✓	-
Loftline Ambiente K3	7,0	01/2007	✓	✓	✓	✓	-	✓	-
Loftline Modul 1	7,0	07/2006	✓	-	-	-	-	✓	-
Kombifire V-85 (Holz)	12,0	07/2013	✓	✓	✓	✓	-	✓	✓
Kombifire Vh-85 (Holz)	12,0	07/2013	✓	✓	✓	✓	-	✓	✓
Mellino	8,0	01/2011	-	✓	✓	✓	✓	✓	✓
Mellino H <sub>2</sub> O	7,5 <sup>1</sup>	05/2015	-	✓	✓	✓	✓	✓	✓



[www.facebook.com/Spartherm](https://www.facebook.com/Spartherm)

[www.instagram.com/spartherm](https://www.instagram.com/spartherm)

[www.youtube.com/sparthermgermany](https://www.youtube.com/sparthermgermany)

[www.spartherm.com](https://www.spartherm.com)

